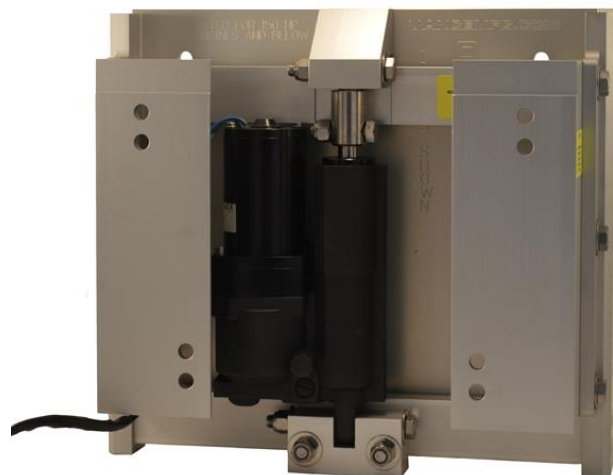


VANCE HYDRAULIC HYDVS-001-6R „ACTION” JACKPLATE

Recommended and Advantaged
Product: on stock anytime!

Hydraulically operated "on the Fly" engine height lifting JackPlate for those, who want to change propulsion and engine height on the water in action!



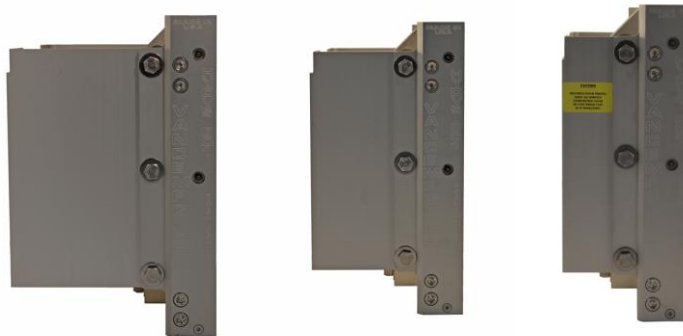
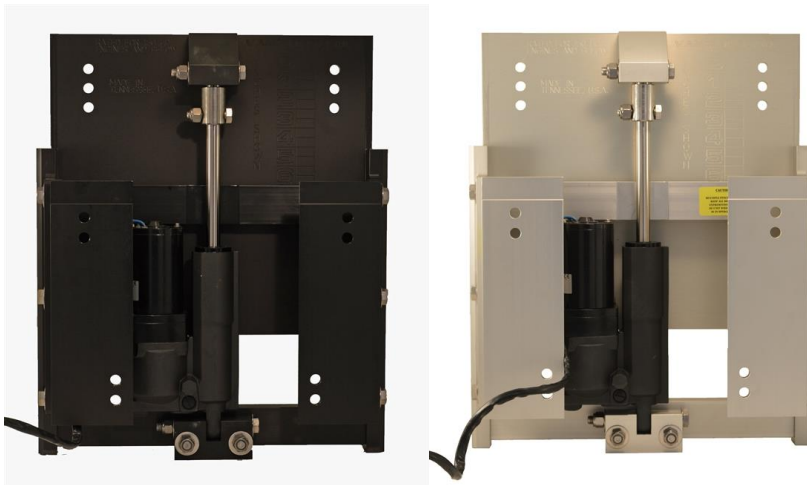
VANCE middle ranged, premium product for up to 150HP outboard engine performance with 20,41kg overall weight

Perfect solution for shallowwater fishermen or water sport enthusiasts!

- **MADE IN USA:** Made of high strength polished 10mm thick Aircraft Quality Aluminium Alloy
- **Basic RAW aluminium surface**, but optionally hard black, or clear anodizing surface for saltwater or brack water usage protecting the hardware against natural corrosion
- Premium quality hydraulic pumps for different body of water:
 - Thomson Linear pump for mainly sweat water usage
 - Parker-Hannifin pump for regular saltwater usage
- Heavy-duty safety solenoid for for height adjustment, protecting the hydraulic system (smooth lower-upper position protection)
- 12 foot, so 3,6 meter wire for up and down controll switch and usual 12 Volt Power Supply
- **6 inch overall, so 15,24cm engine height lifting with the operation of hydraulic pump,**
- HYDVS-001 can operate with UltraFlex cable steering, but recommended to use hydraulic steering with flexible hydraulic pipes! www.hydrodrive.eu
- **6-8-10 inch variable setback**, with patented easy, and cost solution, effective variable setback, transom-engine distance (one product, three setback widths with a special solution)
- Example: Customer chooses a 6 inch 15.24cm narrowest offset width product, but if setback is not appropriate and needs to be increased, it can be switched to 8 or 10 inches with minimal change (by changing a pair of aluminum profiles)! In other words, a width of up to 25.40 cm is available in one product!
- Usually for screw mounting engines, B.I.A. standard hole patterns, even interchangeably brand free
- Predrilled hole pattern on standard B.I.A. profile by the factory (327mm upper, 251mm lower distance with 203mm vertical space, two separate hole profile on the transom side, and three pattern on the engine side for perfect match)



- Clamp on engine adapter is available with additional 1 or 2inch thick StarBoard plate
- Transom side enclosing size : 41,25cm x 30,50cm (on the transom surface)
- Overall size: 46cm depth 40cm height and three sized setback (15,24cm-20,32cm-25,40cm transom-engine distance)
- **Powerful, robust construction weighing only 20.41kg, ideal for mounting up to 150HP performance middle ranged outboard engines**



Optional possibilities:

The VANCE HYDVS-001-6R ACTION JACKPLATE ready to use, immediately capable to use product, but could be upgraded with the following optional elements:

Variable setback, same product, but with different setback:

- HYDVS-001-6R hydraulic Jackplate 6inch setback RAW aluminium
- HYDVS-001-8R hydraulic Jackplate 8inch setback RAW aluminium
- HYDVS-001-10R hydraulic Jackplate 10inch setback RAW aluminium

Colour and surface: Basic RAW surface on the basic product!

- Hard Black anodizing for the premium look, or corrosion resistance for saltwater usage **individually ordered (CODE: HBA)**
- Clear Water anodizing surface for corrosion resistance for saltwater usage **individually ordered (Code: CA)**

Transom strenghtening solution for inside the boat:

- Transom Plate upper, **Optional, always on warehouse (CODE: TP210)**
- Transom Plate lower, **Optional, always on warehouse (CODE: TP211)**



Optional variable SetBack profiles: (for later setback change)

- Setback profile 8inch **optional allways on stock (Code: ANG8)**
- Setback profile 10inch **optional allways on stock (Code: ANG10)**

Bolt kit: Screws, washers and nuts for installation: (Complete package):

- Transom side 4 pieces (d12mm,100mm, A2 Grade)
 - Engine side 4 pieces (d12mm, 50mm A2 Grade)
- Optional, allways on stock! (CODE BKBIA)**

Silicon: For insulation, waterproof installation of the jackplate

- SIKAFLEX white **Optional, allways on stock! (CODE: SKFLX)**

Factory description:

Okay, so you're looking at purchasing a new hydraulic jack plate for your outboard engine but you're not sure what size setback you need and might not know what works best until you actually try the unit out on the water and find out what you purchased is not what you need? Vance Manufacturing has you covered, we have developed a new style of hydraulic jack plate that allows you to change the setback in about 5 minutes without having to send the unit you originally purchased back or simply have to buy a new one and keep the one you have. Our patent pending system allows for the angles attaching the hydraulic system and transom together to be unbolted and removed and exchanged with new angles that we have available and sell directly to you! If you decide to get a larger engine in the future and only have the 6 inch setback angles, no problem Vance Manufacturing has you covered and you can purchase the 8 inch angles and swap them out with the ones you currently have without having to purchase an entire new hydraulic jack plate!

- Overall Dimensions: 18.125" Wide x 15.875" Tall x Variable Setback
- Transom side Dimensions: 16.125" Wide x 12" Tall
- 6" of vertical lift
- Angles are 3/8" aircraft aluminum
- 150 HP Maximum HP Rating
- Hard-Anodized Black Finish Available (Salt Water Ready)
- Heavy Duty Solenoid Included (Winch Contactor)
- Includes 12 feet of wire and switch for operation
- Easy Installation, hydraulic pump and reservoir are self contained inside of the jackplate
- Lifetime Warranty on frame against manufacturer defects
- 1 year hydraulic pump warranty from pump manufacturer
- Weighs 45 pounds
- Proudly machined and assembled at our own factory in TENNESSEE, U.S.A.!
- Patent Pending

Jack Plates are the perfect solution for long shaft engines with a short shaft transom!

Here are the pre-drilled hole dimensions listed below in inches:

- Pre-drilled holes for 1/2" stainless hardware
- 12 7/8" across the top two holes from center to center
- 9 7/8" across the bottom two holes from center to center
- 8" of vertical distance between the top holes and bottom mounting holes

If your holes do not match this configuration, you can drill into the aluminum plate. However, by modifying the unit returns will not be accepted.

If your holes do not match this configuration, you can drill into the aluminum plate. However, by modifying the unit returns will not be accepted.

Purchasing your jack plate is only the first step in ensuring optimized performance of your boat while fishing and hunting. Acquiring the right jack plate parts and accessories for your unique setup is an equally important step in installing, using and maintaining your equipment.

At Vance Manufacturing, we offer high-quality jack plate staples that ensure the efficiency and longevity of your jack plate. Our jack plate accessories include our hydraulic jack plate push-button switch as well as our clamp-on adapter plate, which is vital for most owners of clamp-on engines who are interested in purchasing a standard jack plate for their rig. Products are made in the USA and rigorously tested for effectiveness and quality. If you have any questions about which manual or hydraulic jack plate part or accessory is best for you, please send us an email or give us a call! We are here to help you at Vance Manufacturing and want to ensure you get the right product the first time.